



JOHNS HOPKINS
MEDICINE

Office of Continuing Medical Education

720 Rutland Avenue / Turner 20
Baltimore, Maryland 21205-2195

Nonprofit Org.

U.S. Postage

PAID

Bellmawr NJ

Permit No. 2134

Second Annual

HITEC

*Hopkins International
Therapeutic Endoscopy
Course*

May 2-4, 2018

<http://tinyurl.com/HITEC-JH18>



Dated Material



Johns Hopkins University School of Medicine
Division of Gastroenterology and Hepatology
and The Institute for Johns Hopkins Nursing
present

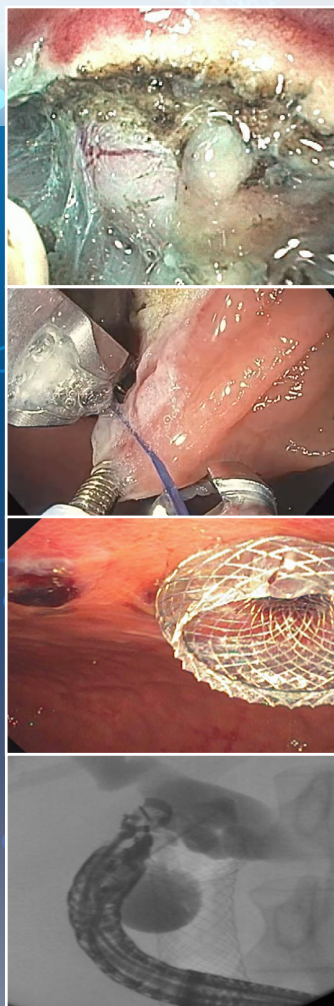
Second Annual HITEC

Hopkins International Therapeutic Endoscopy Course

May 2-4, 2018

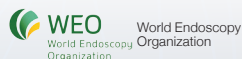
The Johns Hopkins Hospital and
Johns Hopkins University School of Medicine
Thomas B. Turner Building

- Lectures, live demonstrations and hands-on training by superstar national and international faculty from around the globe
- Live demonstrations over 2 days to include basic, advanced and cutting edge endoscopic procedures and techniques
- Demonstration of the latest breakthrough endoscopic equipment and accessories
- Direct interaction with Hopkins and visiting faculty
- Optional one day bariatric endoscopy module including lectures and hands-on training
- Luncheon sessions with national and international faculty
- Optional half-day hands-on lab session with professional training models
- Interactive video sessions with commentary from expert faculty



JOHNS HOPKINS
NURSING

This symposium is endorsed by:



JOHNS HOPKINS
MEDICINE

DESCRIPTION

The Johns Hopkins International Therapeutic Endoscopy Course (HITEC) is an intense 2-3 day course dedicated to providing the practicing endoscopist state-of-the-art updates in luminal, pancreaticobiliary and bariatric endoscopy. In addition to extensive live endoscopy demonstrations and keynote lectures by superstar national and international faculty, our unique format will include faculty led lunch time symposia focusing on the various aspects of therapeutic endoscopy as well as video sessions that encourage opportunities to demonstrate rare cases not typically performed during live courses in the U.S. The pancreaticobiliary endoscopy sessions will illustrate basic and advanced principles and techniques of EUS/ERCP, cholangiopancreatography and interventional EUS. The luminal endoscopy sessions will focus on techniques such as Barrett's endoscopic therapy, EMR, ESD, POEM and EUS-guided anastomosis creation. The bariatric endoscopy sessions will demonstrate primary endoscopic therapies, as well as novel techniques to manage the complications of bariatric surgery. Both therapeutic endoscopy and bariatric endoscopy hands-on labs are offered with training performed by world renowned experts. In short, this unique course featuring super star global endoscopists will ensure detailed and comprehensive illustration of optimal techniques to enhance endoscopic skills, while simultaneously introducing advanced and novel procedures/techniques to endoscopists.

Optional first-come, first-serve hands-on lab sessions with explants and training models will be available. It will consist of the following modules:

Option 1: Bariatric Endoscopy Hands-On Lab

(limited to 25 participants; pre-registration required)

Station 1: Endoscopic Sleeve Gastroplasty

Station 2: Intra-gastric Balloons

Station 3: Transoral Outlet Reduction (TORe)

Station 4: Septotomy and Pneumatic Dilation

Station 5: Perforation/Fistula Closure

Station 6: Aspiration Therapy

Option 2: Therapeutic Endoscopy Hands-On Module

(limited to 40 participants; pre-registration required)

Station 1: Endoscopic Submucosal Dissection (ESD)

Station 2: Endoscopic Submucosal Dissection (ESD)

Station 3: Endoscopic Suturing

Station 4: Full Thickness Resection

Station 5: ERCP with Cholangiopancreatography

Station 6: Interventional EUS/Pseudocyst Drainage

Station 7: Endoscopic Mucosal Resection (EMR) and Hemostasis

Station 8: Zenker's Diverticulotomy

Each participant will rotate through each station with a maximum of five participants per station. Option 1 is limited to 25 participants and option 2 is limited to 40 participants. Please register early as these limited sessions will fill up quickly.

WHO SHOULD ATTEND

This activity is intended for endoscopists, gastroenterologists, surgeons, gastroenterology/surgical fellows, endoscopy nurses and endoscopy technicians.

OBJECTIVES

After attending this activity, the participant will demonstrate the ability to:

- Discuss the latest advances in luminal and pancreaticobiliary endoscopy.
- Discuss different management options for patients with large colon polyps.
- Discuss different management options for patients with peripancreatic fluid collections.
- Present an update on EUS-guided sampling of solid and cystic lesions.
- Illustrate management of patients with upper GI bleeding.
- Discuss management of difficult biliary stones.
- Present an update on the endoscopic management of Barrett's esophagus.
- Present a multidisciplinary approach in the management of obesity including different bariatric endoscopic techniques.

ACCREDITATION STATEMENT

This activity has been planned and implemented in accordance with the accreditation requirements and policies of the Accreditation Council for Continuing Medical Education (ACCME) through the joint providership of Johns Hopkins University School of Medicine and The Institute for Johns Hopkins Nursing. The Johns Hopkins University School of Medicine is accredited by the ACCME to provide continuing medical education for physicians. The Institute for Johns Hopkins Nursing is accredited as a provider of continuing nursing education by the American Nurses Credentialing Center's Commission on Accreditation.



CREDIT DESIGNATION STATEMENT

The Johns Hopkins University School of Medicine designates this live activity for a maximum of 25 *AMA PRA Category 1 Credits*[™]. Physicians should claim only the credit commensurate with the extent of their participation in the activity.

OTHER CREDITS

American Academy of Nurse Practitioners National Certification Program accepts *AMA PRA Category 1 Credit*[™] from organizations accredited by the ACCME.

GENERAL INFORMATION

REGISTRATION

May 2, 2018 · 7:00 – 7:30 a.m.

The registration desk will remain open for the duration of the activity.

LOCATION

Thomas B. Turner Building

Lower Level

Johns Hopkins University School of Medicine
720 Rutland Avenue
Baltimore, Maryland 21205

The Turner Building is located on Rutland Avenue at Monument Street. Directions and campus parking information are available on our website under the contact us tab at <https://HopkinsCME.cloud-cme.com>. Handicapped parking is available in the nearby Rutland Garage. Complimentary round-trip transportation for attendees staying at conference headquarters hotel will be provided. *Johns Hopkins is smoke-free.*

TRAVEL INFORMATION

By Air: Baltimore is served by three major airports: Baltimore/Washington International Airport (BWI) in Maryland; Washington Dulles International Airport (IAD) and Ronald Reagan National Airport (DCA) in Northern Virginia.

Taxi Service: To downtown Baltimore from BWI, the nearest airport, is 15-30 minutes depending on traffic and approximately \$35 one way. Super Shuttle charges less than \$20 one way and reservations are needed. Reservations can be made online at: www.supershuttle.com or call +1 (410) 859-3427.

By Rail: Baltimore is easily accessible by train. Amtrak trains run 24 hours a day, 7 days a week. Baltimore is a major stop for Amtrak's high-speed Acela Express service. Penn Station is easily accessible by I-95, I-83 and I-70 and is a 15 minute taxi ride to Johns Hopkins. For more information visit www.amtrak.com or call +1 (800) USA-RAIL.

American Academy of Physician Assistants (AAPA)


accepts certificates of participation for educational activities certified for *AMA PRA Category 1 Credit*[™] from organizations accredited by ACCME. Physician assistants may receive a maximum of 25 AAPA Category 1 CME credits for completing this program.

The Johns Hopkins University has approved this activity for **25 contact hours for non-physicians.**

This 25 contact hour educational activity is jointly provided with **The Institute for Johns Hopkins Nursing.**

Continuing Medical Education credit is being requested from another applicable medical specialty organization.

MOC STATEMENT

Successful completion of this CME  activity, which includes participation in the evaluation component, enables the participant to earn up to 25 MOC points in the American Board of Internal Medicine's (ABIM) Maintenance of Certification (MOC) program. Participants will earn MOC points equivalent to the amount of CME credits claimed for the activity. It is the CME activity provider's responsibility to submit participant completion information to ACCME for the purpose of granting ABIM MOC credit.

HOTEL ACCOMMODATIONS

A limited block of sleeping rooms has been reserved at the hotel for your convenience and will be available on a first come, first served basis.

Four Seasons Hotel

+1 (410) 576-5800

200 International Drive

FAX: +1 (410) 576-5888

Baltimore, Maryland 21202

Email: reservations.baltimore@fourseasons.com

Website: <http://www.fourseasons.com/baltimore>

Online reservation code: **CI0518JH**

Hotel Reservation Cut-Off Date: April 1, 2018

Make your reservation online or call the hotel directly and specify that you are attending the Johns Hopkins HITEC conference to receive the special rate of \$295 single/double, plus 9.5% occupancy tax and 6% state sales tax per night. Overnight, daily valet and self-parking are available for an additional fee. Check in time is 3:00 p.m. Check out time is 12:00 p.m.

Complimentary roundtrip shuttle bus transportation will be provided from the hotel.

COMPLIMENTARY SOCIAL EVENT

Please join us for an opportunity of networking during the complimentary welcome reception and dinner for registrants and faculty on Wednesday evening, May 2, 2018, immediately following the last session. Guests are invited to attend at an additional charge of \$50. Please indicate your attendance on the registration form. NOTE: The commercial support received is solely for the educational component of this activity and will not be used to support this social event.

SYLLABUS

The syllabus will be accessible online at <http://tinyurl.com/HITEC-JH18> and via your mobile device in the CME CloudCME App prior to the activity.

FEES

Register online at: <http://tinyurl.com/HITEC-JH18>

Methods of Payment: We require full payment prior to the start of the activity. On-site payments by credit card only. The registration fee includes instructional materials, continental breakfasts, refreshment breaks and lunches.

Physicians	\$550
Residents*/Fellows*	\$250
CRNA/NP/PA/RN	\$250
*with verification of status	

Optional (limited to registered attendees)

Bariatric Didactic and Hands-On Module.....	\$250
Therapeutic Endoscopy Hands-On Module	\$200

You will receive a confirmation by e-mail. If you have not received it by **April 27, 2018**, call +1 (410) 502-9636 to confirm that you are registered. A transcript of attendance will be available upon attestation of your credit hours and submission of the post activity online evaluation.

The Johns Hopkins University reserves the right to cancel or postpone any activity due to unforeseen circumstances. In this event, the University will refund the registration fee but is not responsible for travel expenses. Additionally, we reserve the right to change the venue to a comparable venue. Under such circumstances registrants will be notified as soon as possible.

LATE FEE AND REFUND POLICY

A \$50 late fee applies to registrations received after 5:00 p.m. ET on **April 27, 2018**. A handling fee of \$50 will be deducted for cancellation. An additional fee may apply for cancellation of other events, including workshops and social activities. Refund requests must be received by fax or mail by April 27, 2018. No refunds will be made thereafter. Transfer of registration to another Johns Hopkins activity in lieu of cancellation is not possible.

HANDS-ON LABS (LIMITED AND OPTIONAL)

On Friday, May 4, 2018, registrants will have the option of attending a full day bariatric endoscopy didactic and hands-on lab or a half day therapeutic endoscopy hands-on lab. They will take place in the lab at The Johns Hopkins Hospital and for an additional fee. These will be carried on explants and training models. The available training modules are highlighted in the program schedule. Trainers will consist of national and international expert endoscopists. Pre-registration is required. Space is limited.

HOW TO OBTAIN CREDIT

Post activity, an online evaluation will be available to attendees to evaluate the activity and individual presentations and to identify future educational needs. Upon completion of the evaluation, the learner must attest to the number of hours in attendance. Credits earned will be added to the learner's transcript and immediately available for print. The last day to access the evaluation and attest to your credits is **June 15, 2018**.

An outcome survey will be sent to all physician attendees within two months post activity to assist us in determining what impact this activity had on the learner's practice.

EMERGENCY CALLS

On **May 2-4, 2018**, direct emergency calls to the Hopkins registration desk, +1 (410) 955-3673. Messages will be posted for participants.

AMERICANS WITH DISABILITIES ACT

The Johns Hopkins University School of Medicine and The Institute for Johns Hopkins Nursing fully comply with the legal requirements of the ADA and the rules and regulations thereof. *Please notify us if you have any special needs.*

Policy on Speaker and Provider Disclosure

It is the policy of the Johns Hopkins University School of Medicine that the speaker and provider globally disclose conflicts of interest. The Johns Hopkins University School of Medicine OCME has established policies in place that will identify and resolve all conflicts of interest prior to this educational activity. Detailed disclosure will be made in the instructional materials.

Acknowledgement

Applications for commercial support from health care related industries are pending. A complete list of contributors will be provided in the syllabus. Please note that commercial support received is solely for the educational component of the activity and will not be used to provide food and beverage.

Please note: The Physician Payments Sunshine Act was enacted by Congress to increase public awareness of financial relationships between drug and medical device manufacturers and physicians. In compliance with the requirements of this Act, the commercial supporter/s of this activity may require the Johns Hopkins University School of Medicine to report certain professional information (such as name, address, National Provider Identifier (NPI), and State License number) of physician attendees who receive complimentary food and beverage in conjunction with a CME activity. The commercial supporter is required to submit the collected data to the Centers for Medicare and Medicaid Services which will then publish the data on its website.

TO REGISTER OR FOR FURTHER INFORMATION

Register Online.....	http://tinyurl.com/HITEC-JH18
Register by Phone.....	+1 (410) 502-9636
Register by Fax	+1 (866) 510-7088
Confirmation/Certificates/Transcripts	+1 (410) 502-9636
General Information	+1 (410) 955-2959
E-mail the Office of CME	cmenet@jhmi.edu
http://twitter.com/HopkinsCME	
http://www.facebook.com/HopkinsCME	

For general information, please visit the activity webpage at <http://tinyurl.com/HITEC-JH18>



Check out our mobile app CloudCME.

Organization Code: HopkinsCME

For website and CloudCME app technical difficulties, email: cmetechnsupport@jhmi.edu

PROGRAM

DAY 1: WEDNESDAY, MAY 2, 2018

- 7:00 - 7:30 Registration and Continental Breakfast
7:30 - 7:40 **Opening Remarks and Conference Goals**
Mouen Khashab, MD (USA) and Vivek Kumbhari, MD (USA)

Session 1

Moderators: *Marcia Canto, MD, MHS (USA), Sri Komanduri, MD, MS, FASGE, AGAF (USA), Fauze Maluf, MD, PhD (Brazil)*

- 7:40 - 8:00 **Expanding Poetry: E-POEM, G-POEM and Z-POEM**
Amit Maydeo, MD, FASGE (India)
8:00 - 8:20 **Management of Difficult Biliary Stones**
Horst Neuhaus, MD (Germany)
8:20 - 8:40 **Biliary Access in Patients with Altered Anatomy**
Raj J. Shah, MD, FASGE, AGAF (USA)
8:40 -10:00 **Live Endoscopy**
10:00 -10:20 Refreshment Break and Exhibits

Session 2

Moderators: *Miguel Angel Ramirez Luna, MD (Mexico), Uzma Siddiqui, MD (USA), Vikesh Singh, MD, MSc (USA)*

- 10:20 -12:00 **Live Endoscopy**
12:00 - 1:00 **Meet the Professor Luncheon Sessions**

<u>Procedure</u>	<u>Expert</u>	<u>Industry</u>
Full-Thickness Resection	Horst Neuhaus, MD (Germany)	Ovesco
Intragastric Balloons	Barham Abu Dayyeh, MD, MPH (USA)	Apollo/Reshape
POEM	Amit Maydeo, MD, FASGE (India)	Olympus/ERBE
Suturing	Christopher Thompson, MD (USA)	Apollo
GERD	Marcia Canto, MD, MHS (USA) Sri Komanduri, MD, MS, FASGE, AGAF (USA)	Esophyx
ESD	Alessandro Repici, MD (Italy)	ERBE/Olympus
FNB	Uzma Siddiqui, MD (USA)	Medtronic/ Boston Scientific
EMR	Miguel Angel Ramirez Luna, MD (Mexico)	Boston Scientific
Luminal Stenting	Fauze Maluf, MD, PhD (Brazil)	Boston Scientific
Cholangiopancreatocopy	Raj J. Shah, MD, FASGE, AGAF (USA)	Boston Scientific
Barrett's	Marcia Canto, MD, MHS (USA) Sri Komanduri, MD, MS, FASGE, AGAF (USA)	C2 Therapeutics

Session 3

- 1:00 - 1:40 **The Great Debate: Management of Peripancreatic Fluid Collections: Endoscopy, Surgery or IR**
Moderator: *Alessandro Repici, MD (Italy)*
Panelists: *Barham Abu Dayyeh, MD, MPH, (USA), Kelvin Hong, MD, FSIR (USA), Fauze Maluf, MD, PhD (Brazil), Raj J. Shah, MD, FASGE, AGAF (USA), Christopher Thompson, MD (USA), Matthew Weiss, MD, FACS (USA)*

Session 4

Moderators: *Barham Abu Dayyeh, MD, MPH (USA), Anne Marie Lennon, MD, PhD (USA), Horst Neuhaus, MD (Germany)*

- 1:40 - 3:15 **Live Endoscopy**
3:15 - 3:30 Refreshment Break and Exhibits

Session 5

Moderators: *Firas Al Kawas, MD (USA), Alessandro Repici, MD (Italy), Amit Maydeo, MD, FASGE (India)*

- 3:30 - 3:45 **An Evidence Based Approach to EUS-FNA/FNB for Solid and Cystic Lesions**
Uzma Siddiqui, MD (USA)
3:45 - 4:45 **Live Endoscopy**
4:45 - 5:30 **At the Movies**

DAY 2: THURSDAY, MAY 3, 2018

Session 1

7:00 - 7:40 **The Breakfast Debate: What is the Best Management Strategy in Patients with Large Colon Polyps: EMR, ESD, or Surgery?**

Moderator: *Marcia Canto, MD, MHS (USA)*

Panelists: *Miguel Angel Ramirez Luna, MD (Mexico)*

Sri Komanduri, MD, MS, FASGE, AGAF (USA)

Horst Neuhaus, MD (Germany)

Bashar Safar, MBBS, MRCS, FACS, FASCRS (USA)

Uzma Siddiqui, MD (USA)

Session 2

Moderators: *Vikesh Singh, MD, MSc (USA), Raj J. Shah, MD, FASGE, AGAF (USA), Horst Neuhaus, MD (Germany)*

7:40 - 8:00 **New Technologies in Endoscopy**

Alessandro Repici, MD (Italy)

8:00 - 8:20 **Barrett's with Dysplasia: Resect, Burn or Freeze?**

Sri Komanduri, MD, MS, FASGE, AGAF (USA)

8:20 -10:00 **Live Endoscopy**

10:00 -10:20 Refreshment Break and Exhibits

Session 3

Moderators: *Anthony Kalloo, MD (USA), Amit Maydeo, MD, FASGE (India), Alessandro Repici, MD (Italy)*

10:20 -12:00 **Live Endoscopy**

12:00 - 1:00 **Meet the Professor Luncheon Sessions**

Procedure

Full-Thickness Resection

Intragastric Balloons

POEM

Suturing

GERD

ESD

FNB

EMR

Luminal Stenting

Cholangiopancreatography

Barrett's

Expert

Horst Neuhaus, MD (Germany)

Barham Abu Dayyeh, MD, MPH (USA)

Amit Maydeo, MD, FASGE (India)

Christopher Thompson, MD (USA)

Marcia Canto, MD, MHS (USA)

Sri Komanduri, MD, MS, FASGE, AGAF (USA)

Alessandro Repici, MD (Italy)

Uzma Siddiqui, MD (USA)

Miguel Angel Ramirez Luna, MD (Mexico)

Fauze Maluf, MD, PhD (Brazil)

Raj J. Shah, MD, FASGE, AGAF (USA)

Marcia Canto, MD, MHS (USA)

Sri Komanduri, MD, MS, FASGE, AGAF (USA)

Industry

Ovesco

Apollo/Reshape

Olympus/ERBE

Apollo

Esophyx

ERBE/Olympus

Medtronic/

Boston Scientific

Boston Scientific

Boston Scientific

Boston Scientific

C2 Therapeutics

Session 4

Moderators: *Marcia Canto, MD, MHS (USA), Horst Neuhaus, MD (Germany),*

Christopher Thompson, MD (USA)

1:00 - 1:20 **An Update on the Management of Upper GI Bleeding in 2018**

Fauze Maluf, MD, PhD (Brazil)

1:20 - 3:00 **Live Endoscopy**

3:00 - 3:20 Refreshment Break and Exhibits

Session 5

Moderators: *Sri Komanduri, MD, MS, FASGE, AGAF (USA), Anne Marie Lennon, MD, PhD (USA),*

Fauze Maluf, MD, PhD (Brazil)

3:20 - 3:40 **Closing GI Fistulas: Plugs, Stents, Clips or Sutures?**

Miguel Angel Ramirez Luna, MD (Mexico)

3:40 - 4:40 **Live Endoscopy**

4:40 - 5:40 **At the Movies**

5:40 Adjourn

You will receive an email notification to complete the evaluation form and to attest to the number of hours in attendance.

The registration desk will remain open during conference hours.

The Johns Hopkins University School of Medicine and The Institute for Johns Hopkins Nursing take responsibility for the content, quality and scientific integrity of this CME activity.

This schedule is subject to change.

OPTIONAL Hands-on Modules (pre-registration required)

Option 1: Bariatric Module (Whole Day)

- 7:30 - 8:00 Continental Breakfast
8:00 - 8:10 **Opening Remarks and Conference Goals**
Vivek Kumbhari, MD (USA)

Session 1

Moderators: *Barham Abu Dayyeh, MD, MPH (USA), Fauze Maluf, MD, PhD (Brazil), Christopher Thompson, MD (USA), Michael Schweitzer, MD (USA)*

- 8:10 - 8:35 **Medical Management of Primary Weight Loss and Weight Regain**
Lawrence Cheskin, MD, FACP, FTOS (USA)
8:35 - 9:00 **Endoscopic Management of Weight Regain after Bariatric Surgery**
Fauze Maluf, MD, PhD (Brazil)
9:00 - 9:25 **Endoscopic Management of Complications of Bariatric Surgery**
Christopher Thompson, MD (USA)
9:25 - 9:50 **Surgical Management of Complications After Bariatric Surgery**
Michael Schweitzer, MD (USA)
9:50 -10:05 Refreshment Break and Exhibits

Session 2

Moderators: *Gina Adrales, MD (USA), Barham Abu Dayyeh, MD, MPH (USA), Alessandro Repici, MD (Italy), Christopher Thompson, MD (USA)*

- 10:05 -10:30 **Bariatric Surgery in Patients with BMI 3-40 kg/m2**
Gina Adrales, MD (USA)
10:30 -10:55 **Current and Emerging Endoscopic Primary Gastric Therapies**
Barham Abu Dayyeh, MD, MPH (USA)
10:55 -11:20 **Current and Emerging Endoscopic Primary Enteral Therapies**
Alessandro Repici, MD (Italy)
11:20 -11:45 **A Personalized Approach to Endoscopic Bariatric Therapies**
Barham Abu Dayyeh, MD, MPH (USA)
11:45 -12:15 **Case Presentation and Panel Discussion**
12:15 - 1:00 Lunch and Exhibits
1:00 - 4:30 **Bariatric Endoscopy Hands-On Lab**
Station 1: Endoscopic Sleeve Gastroplasty
Barham Abu Dayyeh, MD, MPH (USA)
Station 2: Intra-gastric Balloons
Vivek Kumbhari, MD (USA)
Station 3: Transoral Outlet Reduction (TORe)
Christopher Thompson, MD (USA)
Station 4: Septotomy and Pneumatic Dilatation
Fauze Maluf, MD, PhD (Brazil)
Station 5: Perforation/Fistula Closure
Alessandro Repici, MD (Italy)
Station 6: Aspiration Therapy
Vivek Kumbhari, MD (USA)
4:30 Adjourn
You will receive an email notification to complete the evaluation form and to attest to the number of hours in attendance.
The registration desk will remain open during conference hours

Option 2: Therapeutic Endoscopy Hands-On Module (Half Day)

- 7:30 - 8:00 Continental Breakfast
8:00 -12:00 **Therapeutic Endoscopy Hands-On Lab**

- Station 1: Endoscopic Submucosal Dissection (ESD)**
Saowanee Ngamruengphong, MD (USA)
Station 2: Endoscopic Submucosal Dissection (ESD)
Uzma Siddiqui, MD (USA)
Station 3: Endoscopic Suturing
Olaya Brewer Gutierrez, MD (USA)
Robert Moran, MD (USA)
Station 4: Full Thickness Resection
Horst Neuhaus, MD (Germany)
Station 5: ERCP with Cholangiopancreatography
Raj J. Shah, MD, FASGE, AGAF (USA)
Station 6: Interventional EUS/Pseudocyst Drainage
Sri Komanduri, MD, MS, FASGE, AGAF (USA)
Station 7: Endoscopic Mucosal Resection (EMR) and Hemostasis
Miguel Angel Ramirez Luna, MD (Mexico)
Station 8: Zenker's Diverticulotomy
Amit Maydeo, MD, FASGE (India)

- 12:00 Adjourn
You will receive an email notification to complete the evaluation form and to attest to the number of hours in attendance.
The registration desk will remain open during conference hours

SPEAKERS

ACTIVITY DIRECTOR



Mouen Khashab, MD
Associate Professor of Medicine
Director, Therapeutic Endoscopy
Johns Hopkins University School of Medicine

ACTIVITY CO-DIRECTOR



Vivek Kumbhari, MD
Assistant Professor of Medicine
Director of Bariatric Endoscopy
Director of Endoscopy at JHBM
Johns Hopkins University School of Medicine

JOHNS HOPKINS SPEAKERS



Firas Al-Kawas, MD
Professor of Medicine
Director of Endoscopy
Sibley Memorial Hospital



Gina Adrales, MD
Associate Professor of Medicine
Chief, Division of Minimally Invasive Surgery
Director, Minimally Invasive Surgery Training
and Innovation Center
Associate Director, Johns Hopkins Bariatric
Surgery Fellowship



Marcia Canto, MD, MHS
Professor of Medicine and Oncology
Director of Clinical Research



Lawrence Cheskin, MD, FACP, FTOS
Director, Johns Hopkins Weight Management Center
Associate Professor, Health, Behavior and Society
Johns Hopkins Bloomberg School of Public Health
Director of Clinical Research, Global Obesity
Prevention Center at Johns Hopkins



Olaya Brewer Gutierrez, MD
Advanced Endoscopy Fellow
Division of Gastroenterology and Hepatology



Kelvin Hong, MD, FSIR
Division Chief
Vascular and Interventional Radiology
Associate Professor of Radiology and Radiological
Science and Surgery
Associate Director, Fellowship Program
Chief, Interventional Radiology Center



Anthony Kalloo, MD
The Moses and Helen Golden Paulsen
Professor of Medicine
Director, Division of Gastroenterology and Hepatology



Anne Marie Lennon, MD, PhD
Associate Professor of Medicine, Surgery, Radiology
and Radiological Science, and Oncology
Clinical Director of Gastroenterology
Director, Multidisciplinary Pancreatic Cyst Program



Robert Moran, MD
Advanced Endoscopy Fellow
Division of Gastroenterology and Hepatology



Saowanee Ngamruengphong, MD
Assistant Professor of Medicine
Division of Gastroenterology and Hepatology



Bashar Safar, MBBS, MRCS, FACS, FASCRC
Assistant Professor of Medicine
Chief, Ravich Division of Colorectal Surgery



Michael Schweitzer, MD
Associate Professor of Medicine
Director of Bariatric Surgery
Johns Hopkins Bayview Medical Center



Vikesh Singh, MD, MSC
Associate Professor of Medicine
Director, Pancreatitis Center
Medical Director of Pancreatic Islet Cell
Autotransplantation Program



Matthew Weiss, MD, FACS
Associate Professor of Surgery and Oncology
Surgical Director, Pancreas Cancer Multidisciplinary Clinic
Surgical Director, Liver Cancer Multidisciplinary Clinic
Program Director, Surgical Oncology Fellowship
Miller Coulson Academy of Clinical Excellence

INVITED GLOBAL SPEAKERS



Barham Abu Dayeh, MD, MPH (USA)
Associate Professor of Medicine
Mayo Clinic College of Medicine
Director of Bariatric and Metabolic Endoscopy
Mayo Clinic, Rochester



Sri Komanduri, MD, MS, FASGE, AGAF (USA)
Medical Director, GI Lab
Director of Interventional Endoscopy
Associate Professor of Medicine and Surgery
Division of Gastroenterology and Hepatology
Feinberg School of Medicine
Northwestern University



Miguel Angel Ramirez Luna, MD (Mexico)
Clinical Gastroenterologist and Endoscopist
Pancreatobiliary and EUS Unit
National Institute of Medical Sciences and Nutrition
"Salvador Zubiran"
Mexico City



Fauze Maluf, MD, PhD (Brazil)
Associate Professor
Department of Gastroenterology
Director, Endoscopic Unit
São Paulo University Medical School
São Paulo



Amit Maydeo, MD, FASGE (India)
Chairman
Baldota Institute of Digestive Sciences
Global Hospital
Mumbai



Horst Neuhaus, MD (Germany)
Professor of Medicine
Head, Department of Internal Medicine
Evangelisches Krankenhaus Düsseldorf
Teaching Hospital of the University of Düsseldorf



Alessandro Repici, MD (Italy)
Professor of Gastroenterology
Director of Endoscopy
Humanitas Research Hospital and Humanitas University
Milano



Raj J. Shah, MD, FASGE, AGAF (USA)
Professor of Medicine
Director, Pancreatobiliary Endoscopy
University of Colorado



Uzma Siddiqui, MD (USA)
Associate Professor of Medicine
Associate Director, Center for Endoscopic Research
and Therapeutics (CERT)
Director, Endoscopic Ultrasound and Advanced
Endoscopy Training
University of Chicago Medicine



Christopher Thompson, MD (USA)
Director of Therapeutic Endoscopy
Brigham and Women's Hospital
Associate Professor of Medicine
Harvard Medical School

REGISTRATION FORM

Course Number 80043662/10682

Second Annual HITEC Hopkins International Therapeutic Endoscopy Course**May 2-4, 2018****TO REGISTER:****Online:** <https://hopkinscme.cloud-cme.com/aph.aspx?P=5&EID=10682>**Fax: (866) 510-7088****Phone: (410) 502-9634**

Or mail this form to the Johns Hopkins University, Office of Continuing Medical Education, 720 Rutland Avenue, Turner Room 20, Baltimore, Maryland 21205-2195.

Include e-check or credit card information below.

FULL PAYMENT IS REQUIRED PRIOR TO THE START OF ACTIVITY. I am a Johns Hopkins speaker for this activity.

Please type or print clearly:

Last Name		First Name		MI
Highest Degree	Primary Specialty		Hopkins Faculty/Staff only JHED ID	
For Physicians Only: NPI 10 digits		State of License #		State of License
ABIM #:		Birth Month:		Birth Day:
[] I provide permission for my MOC completion information to be shared and transmitted to the Accreditation Council for Continuing Medical Education (ACCME).				
Organization		Mailing Address:		
City	State	Zip + 4 Code	Country	
Daytime Telephone		Fax Number		
Email (required)				

 Check here if you wish to receive e-mail notices about upcoming CME activities. I plan to stay at the Four Seasons Hotel in Baltimore, Maryland.

What do you hope to learn by attending this activity? _____

Please notify us if you have any special needs. _____

Complimentary Welcome Reception and Dinner:Wednesday, 5/2/2018: I will attend I will not attend.**Registration Fees:**

- Physicians.....\$550
 Residents*/Fellows*.....\$250
 *with verification of status
 CRNA/NP/PA/RN.....\$250

Optional Hands-on Modules 5/4/2018

- Bariatric Didactic and Hands-On Module (limited).....\$250
 Therapeutic Endoscopy Hands-On Module (limited).....\$200
 Reception Guests.....#ppl _____ x \$50 = _____

The registration fee includes instructional materials and food and beverage. For registrations received after 5:00 p.m. ET on April 27, 2018, include a \$50 late fee. On-site registrations are payable only by credit card.

Total amount \$ _____

Payment Type:**JHU Faculty/Staff Only:** If you are using your Tuition Remission Benefit or an ION budget, please upload your fully completed and approved form in the payment section of the online activity link above.

- TR Form: <http://benefits.jhu.edu/documents/trffacandstaff.pdf>
 ION Form: <http://hopkinscme.edu/migration/IonRequest.pdf>

 e-Check: Routing #: _____ Account #: _____ **Credit Card:** VISA MASTERCARD DISCOVER AMEX

Card # _____ - _____ - _____ - _____ Exp. Date _____

Billing Zip Code _____ Security Code _____

Name on Card _____

Signature and Date _____