



**JOHNS HOPKINS**  
M E D I C I N E

**Office of Continuing Medical Education**  
720 Rutland Avenue / Turner 20  
Baltimore, Maryland 21205-2195

Nonprofit Org.  
U.S. Postage  
PAID  
Baltimore, MD  
Permit No. 5839

First Annual

**HITEC**

**Hopkins International**  
**Therapeutic Endoscopy**  
**Course**

**April 5-7, 2017**

<http://tinyurl.com/HITEC-JH>



Johns Hopkins University School of Medicine  
Division of Gastroenterology and Hepatology  
Presents

First Annual

**HITEC**

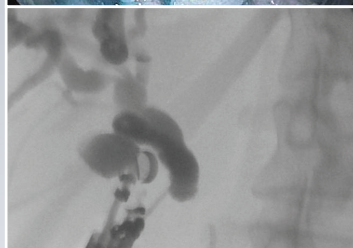
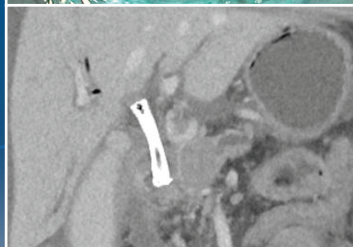
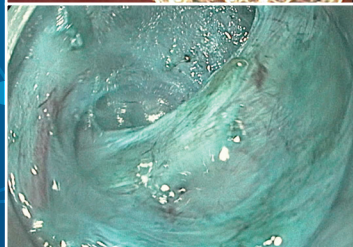
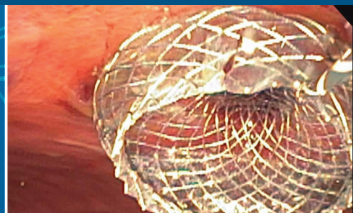
*Hopkins International  
Therapeutic Endoscopy  
Course*

**April 5-7, 2017**

The Johns Hopkins Hospital and  
Johns Hopkins University School of Medicine  
Thomas B. Turner Building  
Baltimore, Maryland, USA

<http://tinyurl.com/HITEC-JH>

- 2.5-day course covering luminal and pancreaticobiliary endoscopy with a half-day of hands-on training
- Procedures will be demonstrated at The Johns Hopkins Hospital
- Fun and educational sessions such as: Oops Videos; Don't Do That at Home Videos; Meet the Professor Sessions
- Lectures and live demonstrations by superstar faculty from around the globe
- Opportunities for personal interaction and instruction from faculty



This symposium is endorsed by:

American Gastroenterological  
Association



AGA INSTITUTE

American Society for  
Gastrointestinal Endoscopy



Brazilian Society of  
Digestive Endoscopy



European Society of  
Gastrointestinal Endoscopy



World Endoscopy  
Organization



World Endoscopy  
Organization



JOHNS HOPKINS  
MEDICINE

## DESCRIPTION

The *first annual* Johns **Hopkins International Therapeutic Endoscopy Course (HITEC)** is an intense 2.5 day course dedicated to provide the practicing endoscopist state-of-the-art updates in diagnostic and therapeutic luminal endoscopy and pancreaticobiliary endoscopy. In addition to extensive live endoscopy demonstrations and keynote lectures, our unique format will include small group meet the professor sessions, "oops" and "don't do that at home" video sessions that encourage opportunities to encase the daily practice encounters as well as rare cases not typically performed during live courses in the U.S. The pancreaticobiliary endoscopy sessions will illustrate basic principles and techniques of EUS/EUS-FNA and ERCP. In addition, advanced and new procedures will be demonstrated. The luminal endoscopy sessions will also focus on both basic and advanced techniques. Procedures such as ESD and POEM will be demonstrated. In short, this unique 2-day course featuring super star global endoscopists will ensure detailed and comprehensive illustration of optimal techniques to enhance endoscopic skills, while simultaneously introducing advanced and novel procedures/techniques to endoscopists everywhere.

**An optional first-come; first-serve limited hands-on lab session with explants and training models will be available. It will consist of six modules to include:**

1. ERCP: Principles and Techniques
2. ERCP: Cholangiopancreatography
3. EUS-FNA/FNB
4. Interventional EUS
5. EMR/ESD
6. Closure/Hemostasis

*Each participant will rotate through each station with a maximum of five participants per station, limiting this part of the course to 30 participants. Please register early as this limited session will fill up quickly.*

## WHO SHOULD ATTEND

This activity is intended for endoscopists, gastroenterologists, surgeons, gastroenterology/surgical fellows, endoscopy nurses and endoscopy technicians.

## OBJECTIVES

After attending this activity, the participant will demonstrate the ability to:

- Discuss the latest advances in luminal and pancreaticobiliary endoscopy.
- Discuss management of patients with large colon polyps.
- Describe the latest advances in managing patients with peripancreatic fluid collections.
- Illustrate principles and techniques of EUS-guided fine needle aspiration and interventional EUS.
- Determine basic and advanced concepts and principles of biliary cannulation during ERCP.
- Discuss endoscopic therapy for obesity.
- Present an update on the endoscopic management of Barrett's esophagus.
- Describe the status of POEM and submucosal endoscopy in 2017.

## GENERAL INFORMATION

### ACCREDITATION STATEMENT

The Johns Hopkins University School of Medicine is accredited by the Accreditation Council for Continuing Medical Education (ACCME) to provide continuing medical education for physicians.



### CREDIT DESIGNATION STATEMENT

The Johns Hopkins University School of Medicine designates this live activity for a maximum of 23.75 *AMA PRA Category 1 Credits™*. Physicians should claim only the credit commensurate with the extent of their participation in the activity.

## GENERAL INFORMATION

### REGISTRATION

Wednesday, April 5, 2017 • 7:00 – 7:30 a.m.

### LOCATION

#### Thomas B. Turner Building

Lower Level

Johns Hopkins University School of Medicine  
720 Rutland Avenue  
Baltimore, Maryland 21205

The Turner Building is located on Rutland Avenue at Monument Street. Directions and campus parking information are available on our website under the contact us tab at <https://HopkinsCME.cloud-cme.com>. Handicapped parking is available in the nearby Rutland Garage. Complimentary round-trip transportation for attendees staying at conference headquarters hotel will be provided. *Johns Hopkins is smoke-free.*

### TRAVEL INFORMATION

**By Air:** Baltimore is served by three major airports: Baltimore/Washington International Airport (BWI) in Maryland; Washington Dulles International Airport (IAD) and Ronald Reagan National Airport (DCA) in Northern Virginia.

**Taxi Service:** To downtown Baltimore from BWI, the nearest airport, is 15-30 minutes depending on traffic and approximately \$35 one way. Super Shuttle charges less than \$20 one way and reservations are needed. Reservations can be made online at: [www.supershuttle.com](http://www.supershuttle.com) or call +1 (410) 859-3427.

**By Rail:** Baltimore is easily accessible by train. Amtrak trains run 24 hours a day, 7 days a week. Baltimore is a major stop for Amtrak's high-speed Acela Express service. Penn Station is easily accessible by I-95, I-83 and I-70 and is a 15 minute taxi ride to Johns Hopkins. For more information visit [www.amtrak.com](http://www.amtrak.com) or call +1 (800) USA-RAIL.

### OTHER CREDITS

**American Academy of Nurse Practitioners National Certification Program** accepts *AMA PRA Category 1 Credit™* from organizations accredited by the ACCME.

**American Academy of Physician Assistants (AAPA)** accepts certificates of participation for educational activities certified for *AMA PRA Category 1 Credit™* from organizations accredited by ACCME. Physician assistants may receive a maximum of 23.75 AAPA Category 1 CME credits for completing this program.

**American Nurses Credentialing Center (ANCC)** accepts *AMA PRA Category 1 Credit™* from organizations accredited by the ACCME.

The Johns Hopkins University has approved this activity for 23.75 **contact hours for non-physicians.**

### HOTEL ACCOMMODATIONS

*A limited block of sleeping rooms has been reserved at each of the Inner Harbor hotels for your convenience and will be available on a first come, first served basis.*

#### Baltimore Marriott Waterfront Hotel

700 Aliceanna Street +1 (800) 228-9290  
Baltimore, Maryland 21202 +1 (410) 385-3000  
FAX: +1 (410) 385-0330

Web Site: [www.baltimoremarriottwaterfront.com](http://www.baltimoremarriottwaterfront.com)

Online Reservation Link:

<https://aws.passkey.com/go/JHUCMEHITEC2017>

#### Hotel Reservation Cut-Off Date: March 14, 2017

Make your reservation online or call the hotel directly and specify that you are attending the Johns Hopkins HITEC conference to receive the special group rate of \$234, single/double, plus 9.5% occupancy tax and 6% state sales tax per night. On-site parking is available at an additional charge. Check-in time is 4:00 p.m. Check-out time is 12:00 p.m.

**Four Seasons Hotel** +1 (410) 576-5800  
200 International Drive FAX: +1 (410) 576-5888  
Baltimore, Maryland 21202

Email: [reservations.baltimore@fourseasons.com](mailto:reservations.baltimore@fourseasons.com)

Website: <http://www.fourseasons.com/baltimore>

Online reservation code: **CI0417JHI**

#### Hotel Reservation Cut-Off Date: March 31, 2017

Make your reservation online or call the hotel directly and specify that you are attending the Johns Hopkins HITEC conference to receive the special rate of \$309 single/double, plus 9.5% occupancy tax and 6% state sales tax per night. Overnight, daily valet and self-parking are available for an additional fee. Check in time is 3:00 p.m. Check out time is 12:00 p.m.

Complimentary roundtrip shuttle bus transportation will be provided to/from the hotels.

## MOC STATEMENT

Successful completion of this CME activity, which includes participation in the evaluation component, enables the participant to earn up to 23.75 MOC points in the American Board of Internal Medicine's (ABIM) Maintenance of Certification (MOC) program. Participants will earn MOC points equivalent to the amount of CME credits claimed for the activity. It is the CME activity provider's responsibility to submit participant completion information to ACCME for the purpose of granting ABIM MOC credit.



## POLICY ON SPEAKER AND PROVIDER DISCLOSURE

It is the policy of the Johns Hopkins University School of Medicine that the speaker and provider globally disclose conflicts of interest. The Johns Hopkins University School of Medicine OCME has established policies in place that will identify and resolve all conflicts of interest prior to this educational activity. Detailed disclosure will be made in the instructional materials.

## COMPLIMENTARY SOCIAL EVENT

Please join us for an opportunity of networking during the complimentary welcome reception and dinner for registrants and faculty on Wednesday evening, April 5, 2017, immediately following the last session. Guests are invited to attend at an additional charge of \$50. Please indicate your attendance on the registration form. NOTE: The commercial support received is solely for the educational component of this activity and will not be used to support this social event.

## SYLLABUS

The syllabus will be accessible online at <http://tinyurl.com/HITEC-JH> and via your mobile device in the CME CloudCME App prior to the activity.

## FEES

**Registration Cut-Off Date: March 31, 2017**

**Register online at: <http://tinyurl.com/HITEC-JH>**

**Methods of Payment:** We require full payment prior to the start of the activity. On-site payments by credit card only. The registration fee includes instructional materials, continental breakfasts, refreshment breaks and lunches.

Physicians.....\$550

Residents\*/Fellows\*/Nurses/NPs/

PAs/Allied Health Professionals .....\$450

*\*with verification of status*

Hands-On Lab Session

*(Optional; limited for registered attendees) .....\$200*

You will receive a confirmation by e-mail. If you have not received it by **March 31, 2017**, call +1 (410) 502-9634 to confirm that you are registered. A transcript of attendance will be available upon attestation of your credit hours and submission of the post activity online evaluation.

The Johns Hopkins University reserves the right to cancel or postpone any activity due to unforeseen circumstances. In this event, the University will refund the registration fee but is not responsible for travel expenses. Additionally, we reserve the right to change the venue to a comparable venue. Under such circumstances registrants will be notified as soon as possible.

## LATE FEE AND REFUND POLICY

A \$50 late fee applies to registrations received after 5:00 p.m. ET on **March 31, 2017**. A handling fee of \$50 will be deducted for cancellation. An additional fee may apply for cancellation of other events, including workshops and social activities. Refund requests must be received by fax or mail by March 31, 2017. No refunds will be made thereafter. Transfer of registration to another Johns Hopkins activity in lieu of cancellation is not possible.

## HANDS-ON LAB (LIMITED AND OPTIONAL)

On Friday, April 7, 2017, an additional half-day will be dedicated for hands-on-training for interested registered attendees in the animal lab at The Johns Hopkins Hospital for an additional fee. This will be carried on explants and training models. Training modules will cover ERCP: Principles and Techniques, ERCP: Cholangiopancreatography, EUS-FNA/FNB, Interventional EUS, EMR/ESD, and Closure/Hemostasis. Trainers will consist of national and international expert endoscopists. Pre-registration is required. Space is limited.

## EVALUATION AND OUTCOMES SURVEY

Post activity, an online evaluation form will be available to attendees to evaluate the activity and individual presentations and identify future educational needs. Upon completion of the evaluation, the learner must attest to the number of hours in attendance. Credits earned will be added to the learner's transcript and immediately available for print.

A survey will be sent to all physician attendees within three months post activity to assist us in determining what impact this activity had on the learner's practice.

## EMERGENCY CALLS

On **April 5-7, 2017**, direct emergency calls to the Hopkins registration desk, +1 (410) 955-3673. Messages will be posted for participants.

## AMERICANS WITH DISABILITIES ACT

The Johns Hopkins University School of Medicine fully complies with the legal requirements of the ADA and the rules and regulations thereof. *Please notify us if you have any special needs.*

# PROGRAM

## DAY 1: WEDNESDAY, APRIL 5, 2017

### MORNING

- 7:00 Registration and Continental Breakfast
- 7:30 **Opening Remarks and Conference Goals**  
Mouen Khashab, MD (USA), Raman Muthusamy, MD (USA)
- 7:40 **Complex Colon Polypectomy: Tips and Tricks**  
Paul Fockens, MD, PhD (Netherlands)
- 8:00 **Live Endoscopy from The Johns Hopkins Hospital**  
*Moderators: Anthony Kalloo, MD (USA), Marcia Canto, MD, MHS (USA), Paul Fockens, MD, PhD (Netherlands)*
- 9:40 Refreshment Break and Exhibits
- 10:00 **Standard and Advanced Biliary Cannulation Techniques**  
Todd Baron, MD (USA)
- 10:20 **How to Increase the Yield of EUS-FNA and EUS-FNB**  
Shyam Varadarajulu, MD (USA)
- 10:40 **Live Endoscopy from The Johns Hopkins Hospital**  
*Moderators: Anne Marie Lennon, MD, PhD (USA), Vikesh Singh, MD, MSc (USA), Shyam Varadarajulu, MD (USA)*

### AFTERNOON

- 12:00 **Meet the Professor Luncheon Sessions**  
*(Sign up at the registration desk during the morning break.)*
- 1. Luminal Stenting**  
Alessandro Repici, MD (Italy), Firas Al-Kawas, MD (USA)
  - 2. Endoscopic Obesity Solutions**  
Eduardo Guimarães Hourneaux de Moura, MD (Brazil), Vivek Kumbhari, MD (USA)
  - 3. Drainage of Peripancreatic Fluid Collections**  
Paul Fockens, MD, PhD (Netherlands), Shyam Varadarajulu, MD (USA)
  - 4. EMR, ESD and Ablation for Barrett's Esophagus**  
Marcia Canto, MD, MHS (USA), Raman Muthusamy, MD (USA)
  - 5. Biliary Drainage Prior to Surgery: Plastic vs. Metal**  
Todd Baron, MD (USA), Vikesh Singh, MD, MSc (USA)
  - 6. All You Need to Know About Pancreatic Cysts**  
Anne Marie Lennon, MD, PhD (USA), Eun Ji Shin, MD, PhD (USA)
  - 7. How to Learn New/Therapeutic EUS Techniques**  
Takao Itoi, MD, PhD, FASGE, FACG (Japan), Carlos Robles-Medranda, MD (Ecuador)
  - 8. Techniques and Applications of Endoscopic Suturing**  
Stuart Amateau, MD, PhD (USA), Reem Sharaiha, MD, MSc (USA)
  - 9. How to Build an Efficient and Competent Endoscopy Team?**  
Anthony Kalloo, MD (USA), Saowanee Ngamruengphong, MD (USA)
- 1:00 **Live Endoscopy from The Johns Hopkins Hospital**  
*Moderators: Takao Itoi, MD, PhD, FASGE, FACG (Japan), Vivek Kumbhari, MD (USA), Reem Sharaiha, MD, MSc (USA)*
- 2:40 **Interventional EUS in 2016**  
Takao Itoi, MD, PhD, FASGE, FACG (Japan)
- 3:00 **"Oops Videos"**  
*Moderators: Todd Baron, MD (USA), Paul Fockens, MD, PhD (Netherlands), Mouen Khashab, MD (USA), Alessandro Repici, MD (Italy)*
- 3:45 Refreshment Break and Exhibits
- 4:00 **Live Endoscopy from The Johns Hopkins Hospital**  
*Moderators: Firas Al-Kawas, MD, FASGE (USA), Joanna Law, MD (USA), Carlos Robles-Medranda, MD (Ecuador)*
- 5:30 **Complimentary Welcome Reception and Dinner with Speakers**
- 7:30 Adjourn

*The Johns Hopkins University School of Medicine takes responsibility for the content, quality and scientific integrity of this CME activity.*

*This schedule is subject to change.*

## DAY 2: THURSDAY, APRIL 6, 2017

### MORNING

#### Breakfast with the Experts

- 7:00 - 7:15 **Role of Lumen Opposing Stents in the Management of Walled-off Necrosis**  
Stuart Amateau, MD, PhD (USA)
- 7:15 - 7:30 **Cholangioscopy and Pancreatocopy for Stone Disease**  
Reem Sharaiha, MD, MSc (USA)

#### General Session

- 7:40 **Endoscopic Management of Hilar Strictures**  
Anthony Kalloo, MD (USA)
- 8:00 **Live Endoscopy from The Johns Hopkins Hospital**  
*Moderators: Stuart Amateau, MD, PhD (USA), Saowanee Ngamruengphong, MD (USA), Eun Ji Shin, MD, PhD (USA)*
- 9:40 Refreshment Break and Exhibits
- 10:00 **An Update on the Management of Barrett's Esophagus**  
Marcia Canto, MD, MHS (USA)
- 10:20 **Practical Method for Learning ESD in the West**  
Alessandro Repici, MD (Italy)
- 10:40 **Live Endoscopy from The Johns Hopkins Hospital**  
*Moderators: Marcia Canto, MD, MHS (USA), Raman Muthusamy, MD (USA), Alessandro Repici, MD (Italy)*

### AFTERNOON

- 12:00 **Meet the Professor Luncheon Sessions - Repeated from Day 1**  
*(Sign up at the registration desk during the morning break.)*
- 1:00 **Live Endoscopy from The Johns Hopkins Hospital**  
*Moderators: Eduardo Guimarães Hourneaux de Moura, MD (Brazil), Anthony Kalloo, MD (USA), Vivek Kumbhari, MD (USA)*
- 2:40 **Endoscopic Therapy for Obesity: Strategies and Techniques**  
Eduardo Guimarães Hourneaux de Moura, MD (Brazil)
- 3:00 **"Do Not Do That at Home" Videos**  
*Moderators: Todd Baron, MD (USA), Paul Fockens, MD, PhD (Netherlands), Mouen Khashab, MD (USA), Raman Muthusamy, MD (USA)*
- 3:45 Refreshment Break and Exhibits
- 4:00 **Live Endoscopy from The Johns Hopkins Hospital**  
*Moderators: Alessandro Repici, MD (Italy), Vikesh Singh, MD, MSc (USA), Shyam Varadarajulu, MD (USA)*
- 5:30 Adjourn

## DAY 3: FRIDAY, APRIL 7, 2017

### MORNING

- 7:00 Continental Breakfast
- 8:00 **Hands-On Sessions (see below)**
- 12:30 Adjourn  
You will receive an email notification to complete the evaluation form and to attest to the number of hours in attendance. The registration desk will remain open during conference hours.

### HANDS-ON SESSIONS

#### HALF DAY OF HANDS-ON TRAINING

*(explants and training modules)*

#### Six Modules:

1. ERCP: Basic Principles and Techniques
2. ERCP: Cholangiopancreatocopy
3. EUS-FNA/FNB
4. Interventional EUS
5. EMR/ESD
6. Closure/Hemostasis

Each participant will rotate through each station with five participants per station.

#### Faculty Trainers:

Stuart Amateau, MD, PhD (USA)  
Eduardo Guimarães Hourneaux de Moura, MD (Brazil)  
Takao Itoi, MD, PhD, FASGE, FACC (Japan)  
Mouen Khashab, MD (USA)  
Vivek Kumbhari, MD (USA)  
Raman Muthusamy, MD (USA)  
Saowanee Ngamruengphong, MD (USA)  
Alessandro Repici, MD (Italy)  
Carlos Robles-Medrand, MD (Ecuador)  
Reem Sharaiha, MD, MSc (USA)  
Vikesh Singh, MD, MSc (USA)

# SPEAKERS

## ACTIVITY DIRECTOR



**Mowen Khashab, MD**  
Associate Professor of Medicine  
Director, Therapeutic Endoscopy  
Johns Hopkins University School of Medicine  
Baltimore, Maryland

## JOHNS HOPKINS ENDOSCOPY SPEAKERS



**Firas Al-Kawas, MD**  
Professor of Medicine  
Director of Endoscopy  
Sibley Memorial Hospital



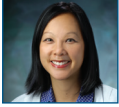
**Marcia Canto, MD, MHS**  
Professor of Medicine  
Director of Clinical Research  
Division of Gastroenterology



**Anthony Kalloo, MD**  
The Moses and Helen Golden Paulsen  
Professor of Medicine  
Director, Division of Gastroenterology  
and Hepatology



**Vivek Kumbhari, MD**  
Assistant Professor of Medicine  
Director of Bariatric Endoscopy



**Joanna Law, MD**  
Assistant Professor of Medicine  
Director of Endoscopic Ultrasound,  
Sibley Memorial Hospital

## INVITED GLOBAL SPEAKERS



**Stuart Amateau, MD, PhD**  
Assistant Professor of Medicine  
Director of Endoscopy  
University of Minnesota Medical Center  
Minneapolis, Minnesota



**Todd Baron, MD**  
Professor of Medicine  
Director of Advanced Therapeutic Endoscopy  
University of North Carolina at Chapel Hill  
Chapel Hill, North Carolina



**Paul Fockens, MD, PhD**  
Professor and Chairman  
Department of Gastroenterology and Hepatology  
Academic Medical Center  
University of Amsterdam, The Netherlands



**Eduardo Guimarães Hourneaux de Moura, MD**  
Professor Livre-Docente do Department de  
Gastroenterologia, Faculdade de Medicina da  
Universidade de São Paulo  
Diretor do Serviço de Endoscopia do  
Hospital das Clínicas da Faculdade de  
Medicina da Universidade de São Paulo  
São Paulo, Brazil



**Takao Itoi, MD, PhD, FASGE, FACG**  
Professor and Chair  
Department of Gastroenterology and Hepatology  
Tokyo Medical University  
Tokyo, Japan

## ACTIVITY CO-DIRECTOR



**Raman Muthusamy, MD**  
Professor of Medicine  
Director, Interventional Endoscopy and General  
GI Endoscopy  
University of California at Los Angeles  
Los Angeles, California



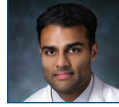
**Anne Marie Lennon, MD, PhD**  
Associate Professor of Medicine  
Director, Multidisciplinary Pancreatic  
Cyst Program



**Saowanee Ngamruengphong, MD**  
Assistant Professor of Medicine  
Division of Gastroenterology  
and Hepatology



**Eun Ji Shin, MD, PhD**  
Assistant Professor of Medicine  
Program Director for Therapeutic  
Endoscopy Fellowship



**Vikesh Singh, MD, MSc**  
Associate Professor of Medicine  
Director, Pancreatitis Center



**Alessandro Repici, MD**  
Professor of Gastroenterology  
Director of Endoscopy  
Humanitas Research Hospital and Humanitas University  
Milano, Italy



**Carlos Robles-Medrandá, MD**  
Head of the Endoscopy Division  
Instituto Ecuatoriano de Enfermedades Digestivas  
World Endoscopy Organization - Outreach Center  
Ecuador



**Reem Sharaiha, MD, MSc**  
Assistant Professor of Medicine  
Director of Bariatric Endoscopy  
Associate Director of the Pancreas Program  
Weill Cornell Medicine  
New York, New York



**Shyam Varadarajulu, MD**  
Medical Director  
Florida Hospital Center for Interventional Endoscopy  
Professor of Medicine  
University of Central Florida College of Medicine  
Florida Hospital Center for Interventional Endoscopy  
Orlando, Florida



## TO REGISTER OR FOR FURTHER INFORMATION

Register Online..... <http://tinyurl.com/HITEC-JH>  
Register by Phone..... +1 (410) 502-9634  
Register by Fax ..... +1 (866) 510-7088  
Confirmation/Certificates/Transcripts ..... +1 (410) 502-9634  
General Information ..... +1 (410) 955-2959  
E-mail the Office of CME ..... [cmenet@jhmi.edu](mailto:cmenet@jhmi.edu)  
<http://twitter.com/HopkinsCME> • <http://www.facebook.com/HopkinsCME>

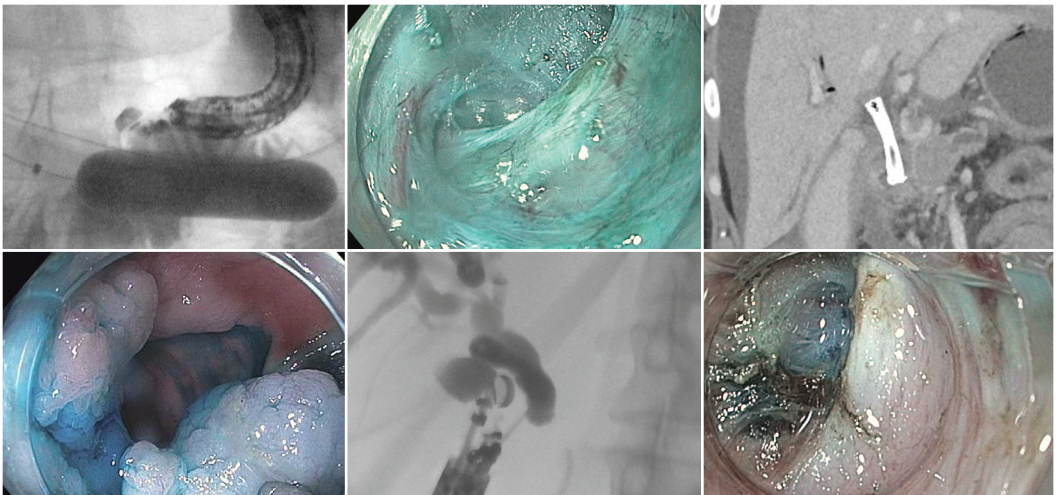
**For general information, please visit the activity webpage at  
<http://tinyurl.com/HITEC-JH>**

**NEW! Check out our mobile app CloudCME.**

Organization Code: HopkinsCME

CloudCME 

For website and CloudCME app technical difficulties, email: [cmetechnsupport@jhmi.edu](mailto:cmetechnsupport@jhmi.edu)



## Acknowledgment

Applications for commercial support from health care related industries are pending. A complete list of contributors will be provided in the syllabus. Please note that commercial support received is solely for the educational component of the activity and will not be used to provide food and beverage.

*Please note: The Physician Payments Sunshine Act was enacted by Congress to increase public awareness of financial relationships between drug and medical device manufacturers and physicians. In compliance with the requirements of this Act, the commercial supporter/s of this activity may require the Johns Hopkins University School of Medicine to report certain professional information (such as name, address, National Provider Identifier (NPI), and State License number) of physician attendees who receive complimentary food and beverage in conjunction with a CME activity. The commercial supporter is required to submit the collected data to the Centers for Medicare and Medicaid Services which will then publish the data on its website.*

# REGISTRATION FORM


Course Number 80040407 / 6642


## First Annual HITEC Hopkins International Therapeutic Endoscopy Course

April 5-7, 2017

### TO REGISTER:

 **Online:** <http://tinyurl.com/HITEC-JH>

 **By fax:** +1 (866) 510-7088

 **By phone:** +1 (410) 502-9636

**Or mail** this form to the Johns Hopkins University, Office of Continuing Medical Education, 720 Rutland Avenue, Turner Room 20, Baltimore, Maryland 21205-2195.

Include e-check or credit card information below.

FULL PAYMENT IS REQUIRED PRIOR TO THE START OF ACTIVITY.

I am a Johns Hopkins speaker for this activity.

*Please type or print clearly*

last name		first name		m.i.	
highest degree	primary specialty		Hopkins faculty/staff only JHED ID		
For Physicians Only: NPI – 10 digits		State License #		State of License	
mailing address					
city		state	ZIP	country	
daytime telephone		fax number			
e-mail (required)					

Check here if you wish to receive e-mail notices about upcoming CME activities.

I plan to stay at the Four Seasons Hotel in Baltimore, Maryland.

What do you hope to learn by attending this activity? \_\_\_\_\_

Please notify us if you have any special needs. \_\_\_\_\_

### Complimentary Welcome Reception and Dinner:

Wednesday, 4/5/2017:  I will attend  I will not attend.

### Registration Fees:

- Physicians.....\$550
- Technologists/Residents\*/Fellows\*/Nurses/Allied Health Professionals.....\$450
- Hands-On Lab (4/7/2017; limited for registered attendees).....\$200

*\*with verification of status*

The registration fee includes instructional materials and food and beverage. For registrations received after 5:00 p.m. ET on March 31, 2017, include a \$50 late fee. On-site registrations are payable only by credit card. We encourage early registration as space is limited.

### Payment Type:

Total amount \$ \_\_\_\_\_

**JHU Faculty/Staff Only:** If you are using your Tuition Remission Benefit or an ION budget, please upload your fully completed and approved form in the payment section of the online activity link above.

- TR Form: <http://benefits.jhu.edu/documents/trffacandstaff.pdf>
- ION Form: <http://hopkinscme.edu/migration/IonRequest.pdf>

**e-Check:** Routing #: \_\_\_\_\_ Account #: \_\_\_\_\_

**Credit Card:**  VISA  MASTERCARD  DISCOVER  AMEX

Card # \_\_\_\_\_ - \_\_\_\_\_ - \_\_\_\_\_ - \_\_\_\_\_ Exp. Date \_\_\_\_\_

Billing Zip Code \_\_\_\_\_ Security Code \_\_\_\_\_

Name on Card

Signature and Date